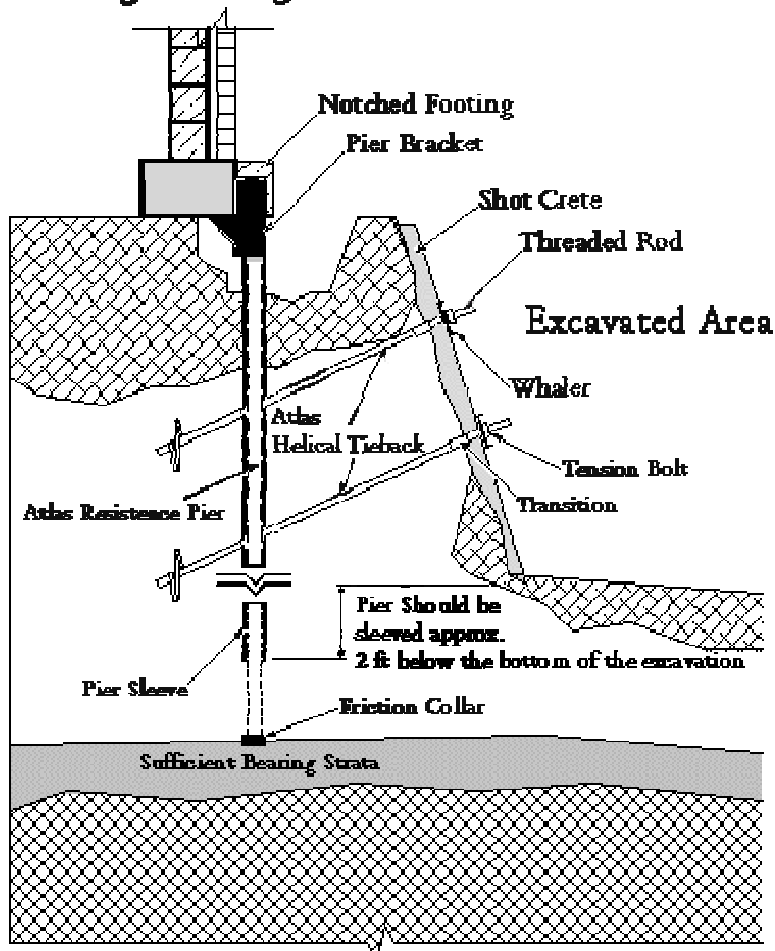


SHORING FOR BASEMENT ADDITION



This project is a communications building that was being added on to with a basement addition. We installed Atlas Resistance Piers on the footings to support the building vertically; and we installed Atlas Helical Tiebacks to support the soil underneath horizontally. **This process took us five working days to complete.**

Existing Building



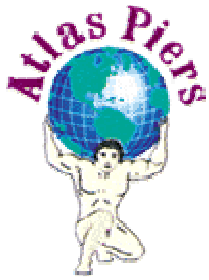
Building Shoring for Adjacent Basement Addition

Drawn By: Clay Berkhan
Systems Engineer / Atlas Piers of Atlanta





Atlas Piers of Atlanta, Inc.



For more information please contact us at
info@atlaspiers.com

Office: 770-740-0400

Fax: 770 740 1513

